



## Why OESuite™ for Capital Projects and Turnarounds?

Because cost overruns on capital projects are not uncommon, and on large capital projects, cost overruns can range from \$750,000 - \$2,000,000 per day. OS can routinely save clients on their capital projects through managing complex projects for predictability in their outcome. The Operational Sustainability, LLC® (OS) **OESuite™ Turnaround Work Process** comes pre-loaded with a vast library of job-aids, real world examples, and guidance documents. From Concept and Design, through Construction, Startup and Operate – we are here to help. Our tools put the shared knowledge of your people and the proven expertise of our people into one integrated system and then we put it to work on your project or turnaround. It's smarter Project Management and robust portfolio management.

### How Big is the Need?

Effective wrench time of only 2 hours in an 8-hour shift is not uncommon along with crews waiting on permits for 1-2 hours per shift. We can fix this, boosting effective wrench time and reducing time and cost overruns.

### Why?

Experience enterprise-wide recurring annual benefits of \$189,000,000–\$245,000,000 (20 year life) and one-time benefit of \$135,000,000–\$175,000,000 on a single project of \$1.5 to \$3.0 Billion.

OESuite integrates out-of-the-box with premier project management tools including Primavera by Oracle®, SAP PM, SAP MRS, and Microsoft Project. OS also offers a project-planning tool via [www.verified-market.com](http://www.verified-market.com) to tackle your projects. We offer experienced on-site available staff to mentor and assist with turnarounds.

### Capital Effectiveness Outcomes

- We act as external **project managers** to help guide you through your capital projects and STOs
- Act as part of your team to drive **results** and **accountability**
- We offer comprehensive **scheduling** capabilities
- We help you **create work processes**
- **Project milestones**, deliverables, **cost estimates**, comprehensive project support
- Develop a **detailed** action plan for each **turnaround or capital project**
- Pre-turnaround **planning and contracting** strategies

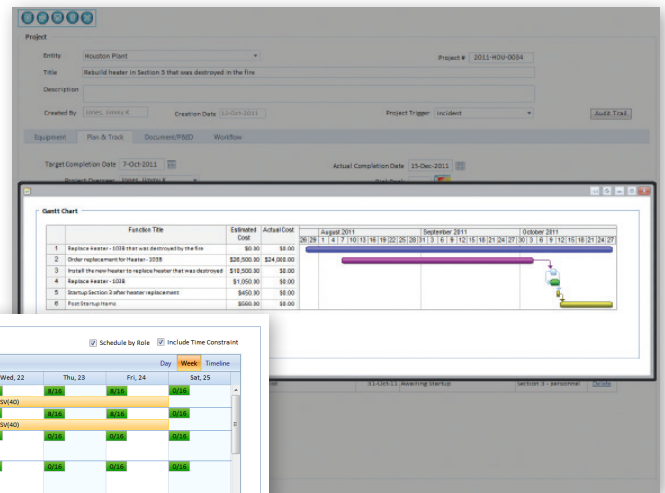
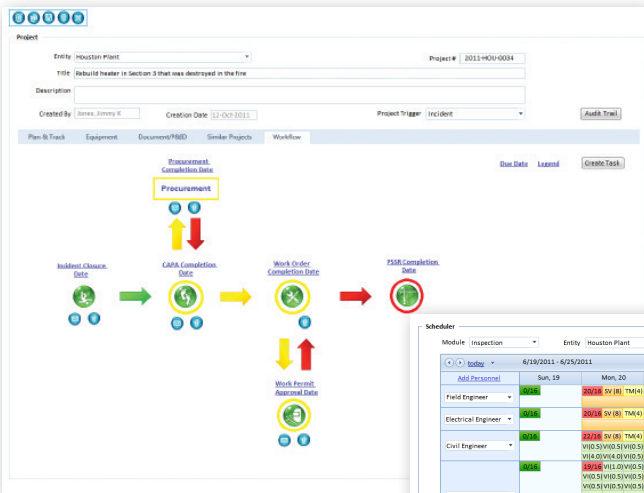
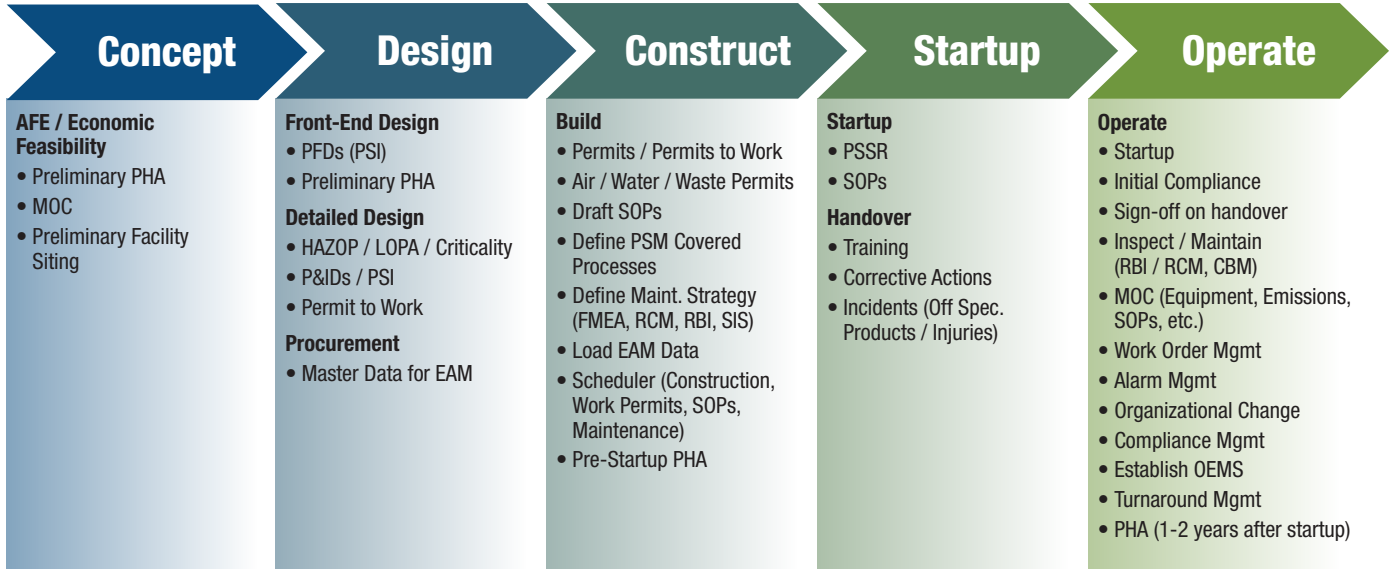
**Safer, more predictable projects and turnarounds completed on time, on budget, and with less down time overall.**





# Capital Projects and Turnaround Management

## Blueprint for Capital Projects



**More efficient utilization of assets, both human and equipment.**

Entity	Type	Inspection #	Equipment	Inspection Point	Work Load (Grew and workload hr)	Last Inspection Date	Interval	Estimated Next Inspection Date	New Next Inspection Date
Houston Plant	Testing	1501-0003	Line - 200C	P-200C-L, P-200C-R, P-200C-B	3 Field Engineer (12 hr)	6/21/2009	3 Year	6/23/2011	6/22/2011
Houston Plant	Electrical	1501-0008	Transformer-1C	T-1C-1, T-1C-2, T-1C-6	1 Electrical Engineer (12 hr)	6/30/2006	5 Year	6/30/2011	6/22/2011

Visit [www.OESuite.com](http://www.OESuite.com) or email [info@DrivingOE.com](mailto:info@DrivingOE.com) for more information.